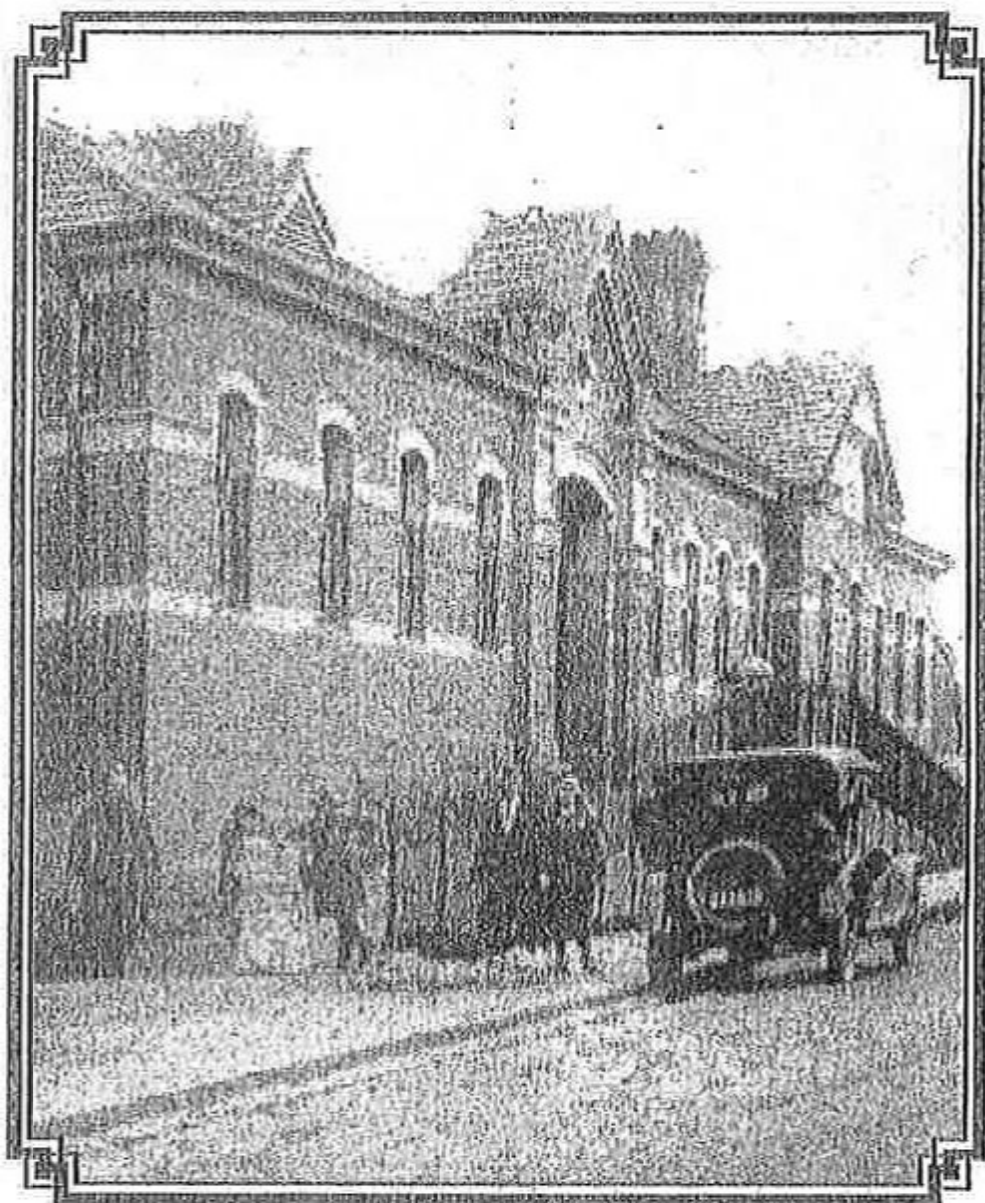


KORUMBURRA HERITAGE TRAIL

*A rich vein of history in
South Gippsland*



South Gippsland
Shire Council

Come for the beauty. Stay for the lifestyle.

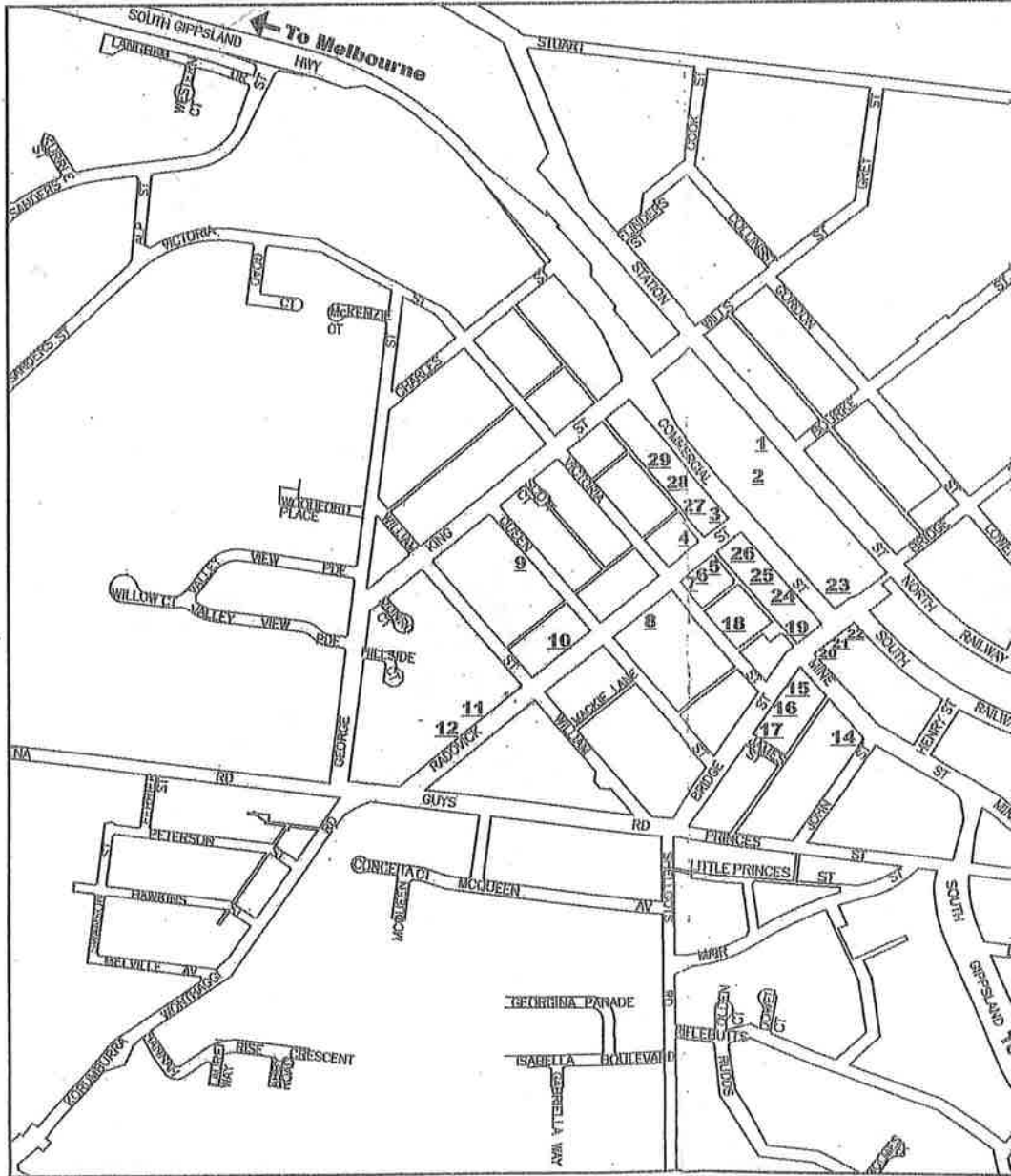
This brochure was
produced as a joint
project of Korumburra
StreetLIFE Project,
and the Korumburra
Historical Society,
October 2007.

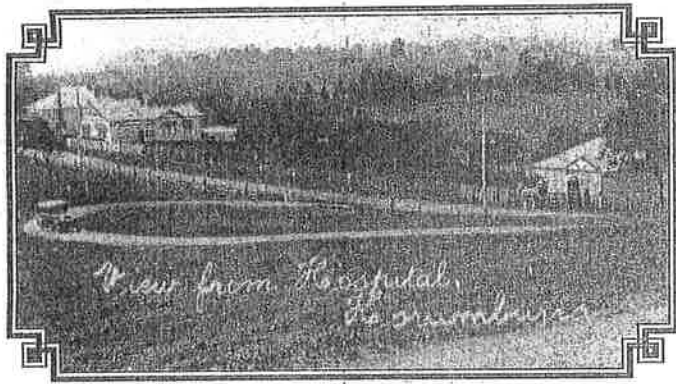
A Victorian
Government
Initiative



COAL CREEK COMMUNITY PARK & MUSEUM

The Park is a short drive along the South Gippsland Highway situated on the eastern edge of town. It has created a vivid image of how the area used to be in the days when coal mining was the main industry. There are many historical buildings as well as a significant collection of items and memorabilia of bygone days.





KORUMBURRA

A pleasant 1½ hour drive from Melbourne, Korumburra is set among the rolling hills on the edge of the Strzelecki ranges. With a population of nearly 4000 the town is fast becoming a hub of South Gippsland, being central to all the region's major tourist attractions and close to major industrial regions. Having a great lifestyle and being well served by excellent community facilities Korumburra has become a residential place of choice offering real 'country living'.

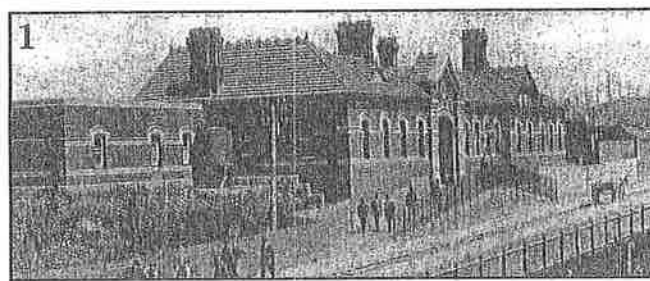
Proclaimed a town in 1887, Korumburra's settlement and future was ensured by the discovery of black coal and the mining boom which followed. The surrounding fertile farmland saw the area become one of the richest and most productive dairying and agriculture districts in Australia, still a major industry in the 21st century.

The first major building in the town was the Korumburra Hotel, built in 1889 by Antonio Radovick, an enterprising European; who was a generous supporter of the expanding community.

The town boasts one of the finest, original remaining Railway Stations in Victoria. Built in 1908, it was a major station in this area and is listed on the Government Heritage Register.

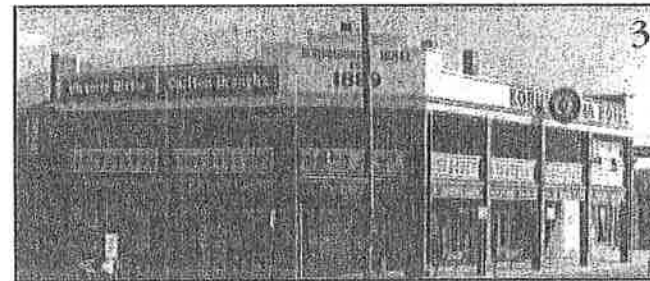
In this walking tour, we would like to share with you some of the present and much of the past. They blend together to form the basis of Korumburra's future.

The walk can be completed in approximately one and a half hours. Please remember that many of the buildings which we have described are privately owned and their occupants' privacy should be respected.



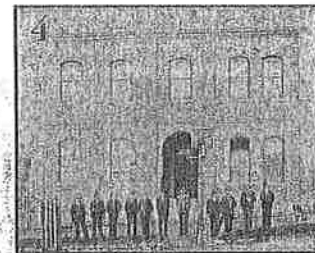
1. KORUMBURRA RAILWAY STATION - Built 1908 it is a fine example of an Edwardian building. Internally, the refreshment room ceiling is of special interest with its pressed metal form and dormer windows providing all natural light.

2. RAILWAY SUBWAY - Built in 1895, the subway provided a vital connection for passengers crossing the line and entering Commercial St. It still provides pedestrian access between Commercial St on the south and Station St. on the north of the line.

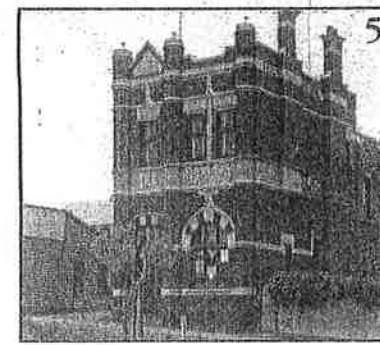


3. KORUMBURRA HOTEL - Owned and built by Antonio Radovick in 1889 before the rail line reached the town. Antonio was known as the "Father" of Korumburra who had a great influence on the town development. The town's first Doctor, Dr. McGee had rooms in the Hotel in 1892 and Mr Lawrence, a chemist also used the Hotel in 1892. In 1890 Catholic Mass was celebrated here 'on the landing at the top of the stairway'

4. SITE OF THE MECHANICS HALL - The hall was moved here in 1895 from a site on top of the Factory hill (Station St.) Originally a timber building, up to 300 children used it as a school from 1892. A brick front was added in 1902 and was rebuilt in brick in 1926. It was lost to a fire in 1975.



5. THE SAVINGS BANK BUILDING - Built 1902 the impressive original red brick building was later modernised to its present style. The State Savings Bank sold it to the Water Board, and is now owned by a firm of accountants.



6. "BOSTON'S CARRIAGE FACTORY" - Robert Boston established as a blacksmith and carriage builder on this site in 1893. Three generations of the family have managed this business over a period of 102 years. A buggy from earlier times can be seen in the showroom.

7. FALCONER BUILDING - Neil Falconer established his timber yard on this site in 1893. He built many significant buildings in the town including the Savings Bank Post Office in Bridge St., Presbyterian Church in Radovick St and the State School in Mine Road in 1912.

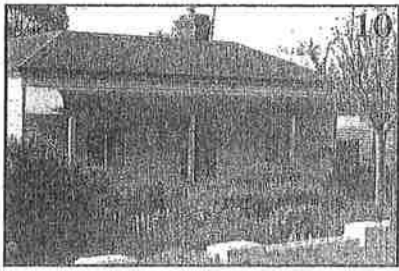
8. SITE OF THE MISSES YOUNG SCHOOL - No's 2 & 23 Radovick St, one of Korumburra's first private schools was conducted on this site in 1893, by two young women who were related to a local bank manager, R.S.B. Young. Dr. Murdoch McKenzie also practiced here c1900.

9. COLEMAN PARK - James Just Coleman who was associated with Peter Hudson Manager of the Austral Coal Mine, bequeathed this land to the people of Korumburra. The park has had landscape alterations since 1996 to incorporate the War Memorial which was moved from the top of Commercial St. in 1970. The memorial gate built in 1955 honours Sir Stanley Savige.

KORUMBURRA HERITAGE TRAIL

10. MINERS COTTAGES

- 32 & 34 Radovick St, retained and restored. These are excellent examples of one of the many styles of miner's cottages to be found in the town.

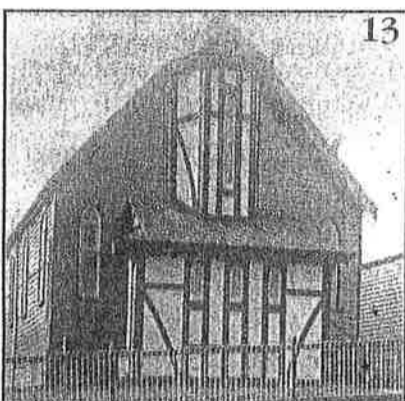


11. 'BRAESIDE' - 52 Radovick St. Mr Peter Hudson who owned and managed the Austral coal mine from 1908 was the owner of this house for many years. Built c1900, its Edwardian design features a bull-nosed verandah with a return and decorative posts. A central skylight can be seen above the roof level.

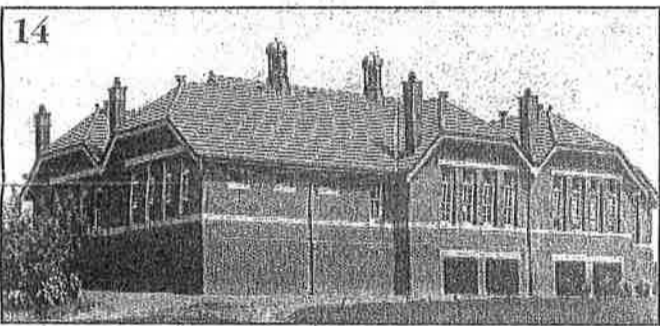
12. NORFOLK PINE TREES - These three pines in the garden at no. 52 "Braeside" are magnificent examples of this variety, being planted around 1900.

13. BAPTIST CHURCH

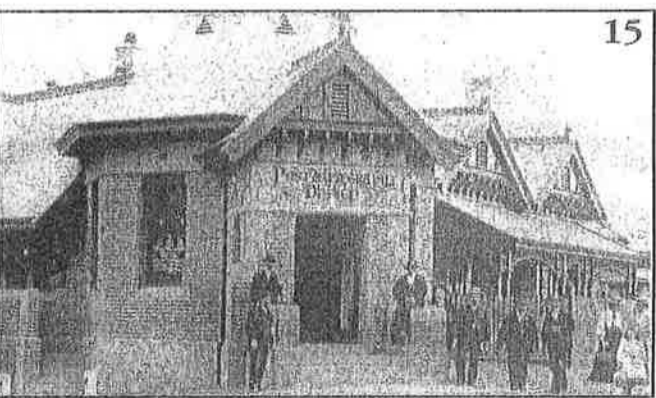
- Apart from minor extensions and renovations this is the original Church building completed and opened in January 1895. This is the only original church building standing in Korumburra.



14



14. STATE PRIMARY SCHOOL NO. 3077 - There has been a school on this site since 1895. The original wooden building was brought down from Clunes and was later used as the higher elementary school. The brick building facing Mine Road was built by Neil Falconer in 1912. It was used as a temporary emergency hospital during the 1919 "Influenza Epidemic"



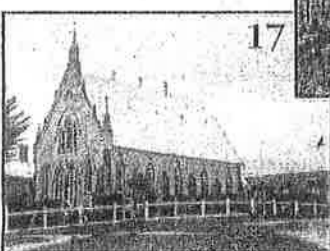
15. POST OFFICE - on the corner of Mine Rd. & Bridge St. built in Edwardian style by Neil Falconer in 1904. Extensions were carried out in 1948, it was used as the telephone exchange for many years, finally closing in 1974.

16. POLICE STATION - Built on this site in 1897. The first police were in a house in Station St. and then in the National Bank building in Commercial St. There is a tree of significance, a Victorian Blue Gum, on the nature strip outside the Station.

17. SITE OF THE WESLEYAN CHURCH - It was the first Church built in



Korumburra, later known as the Methodist Church and now the Uniting Church. The present building is the third Church on this site.

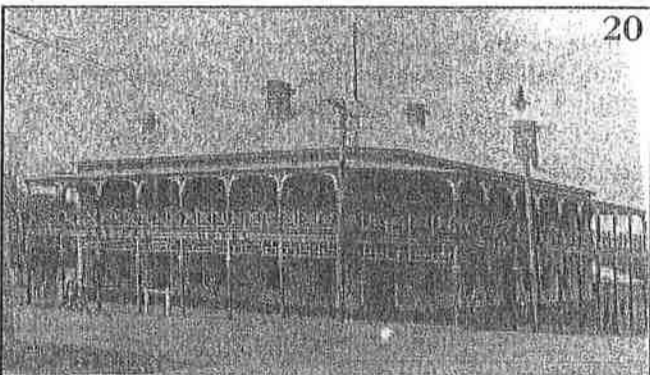


18. PARK BELOW VICTORIA ST. KINDERGARTEN

- This park contains a number of significant trees, including an English Oak, a Silky Oak and a Sweet Chestnut. There is also a large Ivy-covered stump which is all that remains of a forest giant Gum, which stood about 150 feet tall in the early 1890s.

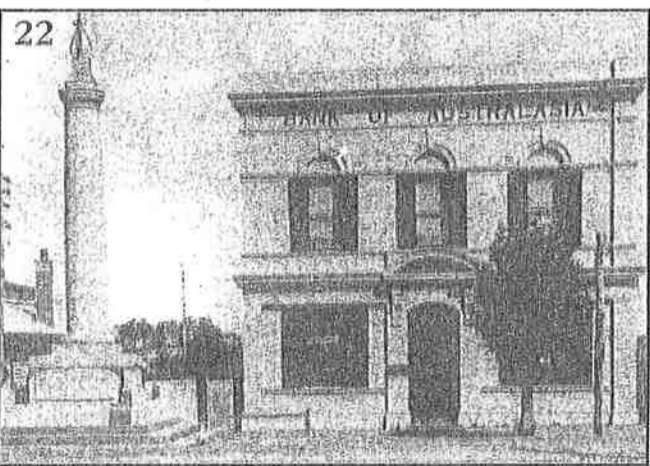


19. TOP OF THE TOWN SHOPS - Built by W Nuttall in 1892. Built as the "Temperance Hotel", some of the businesses operated on this site include J. Lees fruit and confectionery 1897, Duncan Robinson's Grocery, W. Fisher's builder's and hardware, and a Chinese restaurant.

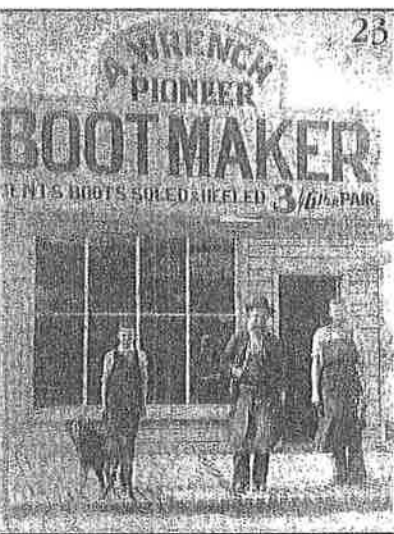


20. AUSTRAL HOTEL - John Sutcliffe had it built in 1894, of Edwardian design with modifications. Lodges had their meetings in the upstairs rooms including the Masonic Lodge. The building has been restored to its original period style.

21. SITE OF THE TIN SHED SCHOOL - No. 36 Bridge St, the first school was held here in 1890. The corrugated iron shed was moved from lower Commercial St and renovated to suit the school requirements, it had been used by Mr Shepherd as his general store and Post Office.

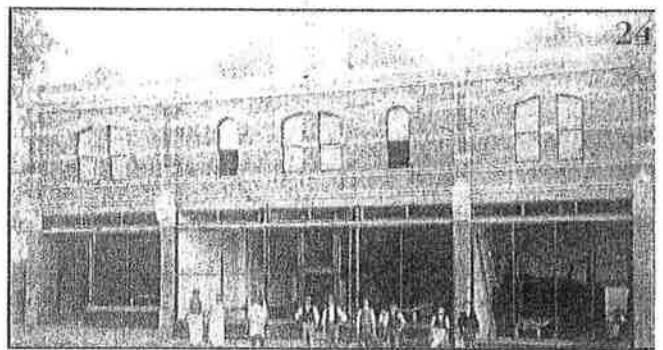


22. THE BANK OF AUSTRALASIA SITE - The original school site, owned by Mrs Shepherd, was purchased by the bank in 1899 and permanent premises were built here. The old building was sold to Alex Scott & Co in 1971, it was later demolished and the present building erected.



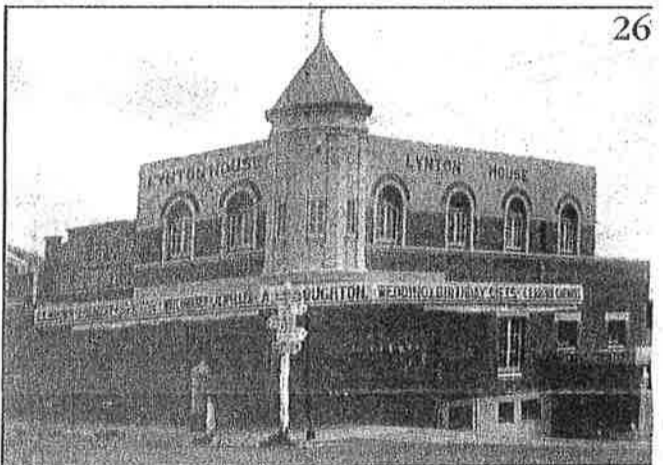
23. SITE OF THE BOOTMAKERS SHOP, 'MOBIL CORNER'

- Thomas Wrench, bootmaker, had a shop on this corner in 1892. The Wrench family operated their shoe and boot business in various sites over the next hundred years.



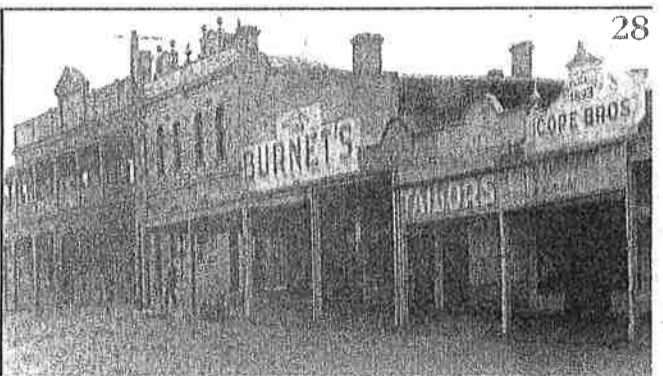
24. SUTCLIFF'S BUILDING - John Sutcliff was the owner builder of these three shops in 1891. The shop on the west end was occupied by F. Weickhardt a Bakery in 1892. W. Henderson was the occupier of the middle shop, while Williams the tailor had his business in the third shop.

25. SITE OF O. GILPIN'S STORE - Video Shop 3: Commercial St. - Oliver Gilpin established his first store in Mine Road Korumburra in 1895. He soon moved to Commercial St and in 1921 built a new store at No. 31 Gilpin could lay claim to the first chain stores in Victoria establishing 94 stores throughout Victoria and Tasmania selling to Foy & Gibson 1944, later G.J. Coles 1951 (Cole Myer)

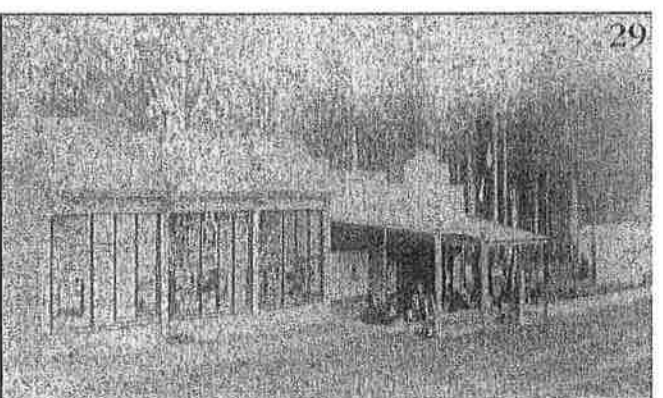


26. LYNTON HOUSE - The Original building was occupied by C.E. Brown a chemist. Rebuilt in 1929 it housed Bullock's grocer among numerous other businesses until the present time.

27. SITE OF THE FIRST NATIONAL BANK IN KORUMBURRA - This property was owned by Antonio Radovick who built two shops in 1890. The second shop was a land agent's business and in 1892 became the Post Office with Mrs Shepherd as Post-mistress.



28. JOHN BURNET'S HARDWARE STORE - 85 Commercial St (Burra Hardware) There has been a hardware store on this site since 1893 and was operated by the Burnet family until 1963.



29. FOREMAN'S BUILDINGS NO'S 97, 99, 101 - Three shops were built on this site in 1892, of Victorian design. The interior of one of these has changed little in the intervening years. The first businesses operated here, were a newspaper office, a jeweler and musician, "The Colliery Store" and a mixed business and barber's shop.